

Anti-SOD2 Antibody
Mouse Monoclonal Antibody
Catalog # AP53486**Specification**

Anti-SOD2 Antibody - Product Information

Application	WB
Primary Accession	P04179
Other Accession	NM_000636
Reactivity	Human
Host	Mouse
Clonality	Monoclonal
Isotype	IgG2b
Immunogen	Synthetic peptide corresponding to human SOD2 protein
Purification	Affinity purified
Calculated MW	22KDa KDa

Anti-SOD2 Antibody - Additional Information**Gene ID** 6648**Other Names**

Indophenoloxidase B; IPO B; IPOB; Manganese containing superoxide dismutase; Manganese SOD; Manganese superoxide dismutase; Mangano superoxide dismutase; Mn SOD; Mn superoxide dismutase; MNSOD; MVCD6; SOD 2; SOD2; SODM_HUMAN; Superoxide dismutase [Mn] mitochondrial; Superoxide dismutase [Mn], mitochondrial; Superoxide dismutase 2 mitochondrial.

Dilution

WB~~1:1000

Format

Liquid in PBS containing 50% glycerol, 0.5% BSA and 0.02% sodium azide, pH 7.3.

Storage

Store at 4°C short term. Aliquot and store at -20°C long term. Avoid freeze/thaw cycles.

Anti-SOD2 Antibody - Protein Information**Name** SOD2**Function**

Destroys superoxide anion radicals which are normally produced within the cells and which are toxic to biological systems.

Cellular Location

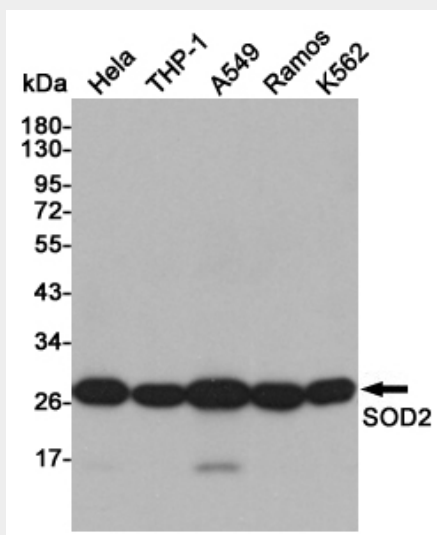
Mitochondrion matrix.

Anti-SOD2 Antibody - Protocols

Provided below are standard protocols that you may find useful for product applications.

- [Western Blot](#)
- [Blocking Peptides](#)
- [Dot Blot](#)
- [Immunohistochemistry](#)
- [Immunofluorescence](#)
- [Immunoprecipitation](#)
- [Flow Cytometry](#)
- [Cell Culture](#)

Anti-SOD2 Antibody - Images



Western blot detection of SOD2 in HeLa, THP-1, A549, Ramos and K562 cell lysates using SOD2 Mouse mAb (1:1000 diluted). Predicted band size: 25 kDa. Observed band size: 22 kDa.

Anti-SOD2 Antibody - Background

Destroys superoxide anion radicals which are normally produced within the cells and which are toxic to biological systems.